

A woman with curly hair, wearing a patterned dress, stands and holds a black mug while smiling. A man with a beard, wearing a blue blazer, sits and looks at a laptop. In the background, a glass wall has the text 'WORK HARD STAY HUMBLE' and a TV shows a landscape. The top of the image has a pattern of white circles on a dark background.

isolvedNetwork

Join Us. We Are Ready for You.

**Win More.
Grow Faster.**

Join Us!



For the last few years, we have been working hard at isolated to deliver a best-in-market and secure alternative to the software that has long dominated the PEO industry. We believe the industry deserves better and that PEOs should have a partner they can rely on to “win more and grow faster” – all at a lower total cost of ownership.

We’ve come a long way since we started our PEO journey and we are ready for you. From our People Cloud platform that provides all the capabilities your business needs, to our contemporary user-friendly experience that will help you win more in the market – – and our continuing innovation to deliver new solutions such as Expense Management, Predictive Analytics, or a Conversational Virtual Assistant – – we can deliver for you.

Let’s explore what **being a Partner with isolated can deliver** to you and your business.

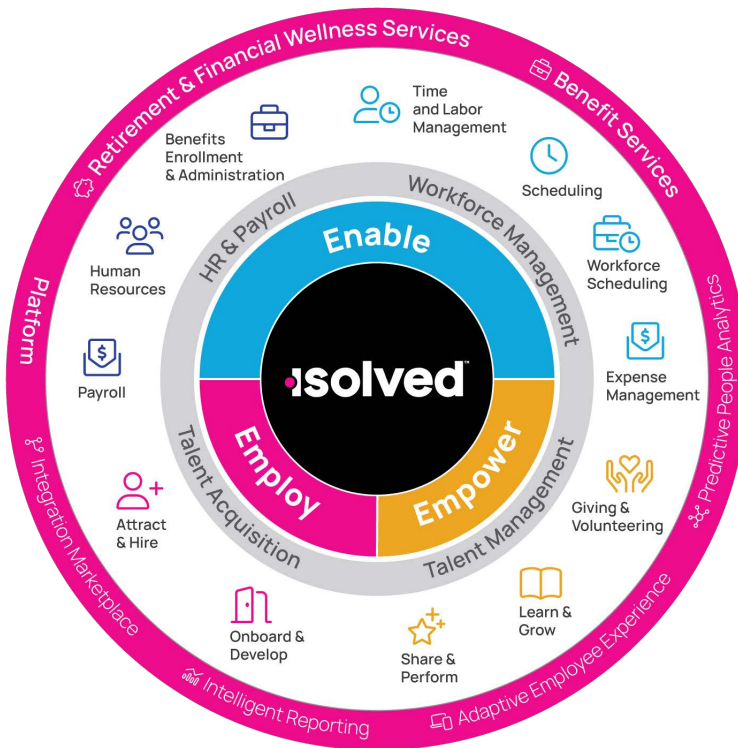
“As one of the first PEO partners to join the isolated Network, we have provided our expertise in the continued development of the PEO back-office functionality offered through the platform. **Our voice has been heard, respected and appreciated.** That is a true partnership you don’t find everywhere.”

– isolated PEO partner since 2019

•isolved People Cloud.

A single proprietary platform delivering
all the capabilities you need to win

A broad set of features and functionality you can use to grow your business and reduce dependencies on sourcing and configuring multiple solutions or complex set-up.



Additional Integrated Tools

isolved Tax & Treasury

isolved University

isolved View – Service Bureau Level Data Access

Intelligent Reporting

One-Touch Single Employee Record

Predictive People Analytics

Artificial Intelligence

Conversational Virtual Assistant



Reactive &
Adaptive EX

SFTP Transmission

Scalable, Secure & Futureproof Platform

REST API



Benefit Services

isolved Marketplace

“

You have evolved a ton and
your Adaptive Employee
Experience is a weapon
for my sales team.

”

- CEO of PEO Partner

iSolved AC

Good morning, Annie
It's 9:00am

Recently Visited

- Time Off
- Dashboard
- Personal
- Pay History

Build 1234567

Manage

- Dashboard
- Calendar
- Scheduler

People Cloud

- iSolved hire
- iSolved mojo
- iSolved timeforce

Benefits

- My Benefits
- Benefit Enrollment
- Benefit Updates
- Life Events

Time and Attendance

- Time Card
- Time Off
- Calendar

Personal

- Personal Info
- Employment
- Documents

Marketplace Integrations

- iSolved hire
- iSolved mojo
- iSolved timeforce

Connect with us

- Twitter
- Facebook
- Instagram
- LinkedIn

Pay and Tax

- Direct Deposits
- Pay History
- Tax Updates

We're evolving with the future of work.

iSolved

iSolved AC

Pay History

Pay Summary

Pay Period: [Select] YEAR

Pay Date: June 2, 2025

\$1123.69 **\$1608.22** **80**

Paystub detail

Earnings and memos

Description	Rate	Current Hour	Current \$	YTD hours	YTD \$
Regular hours	0.00	0.00	0.00	0.00	0.00
Overtime**	0.00	0.00	0.00	0.00	0.00
Gross earnings	0.00	0.00	0.00	0.00	0.00

*None earnings - not included in totals

Employee taxes

Employee deductions

Time off

Direct deposits

DOWNLOAD

iSolved AC

Time Off Request

Create New

Time Off Request

Policy: Select

Requester: [Select] Requested: [Select]

From: [Select] To: [Select]

Requested days off: [Select] [Select] [Select] [Select] [Select] [Select] [Select] [Select] [Select] [Select] [Select] [Select]

Start time: [Select] End time: [Select]

Total requested: [Select] Hours per day: [Select]

Notes: [Text Area]

CANCEL SAVE

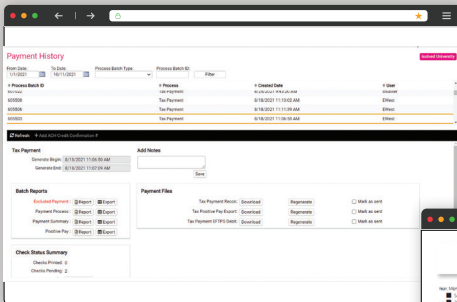
Committed to PEO

“

We began serving PEOs in late 2018 after several PEOs approached us to provide them with a solution that would enable them to grow their business. We partnered with those early adopters and their input was invaluable – our product reflects their needs and will continue to for both the front end and back office.

”

- Chris Mantua, Chief Product Officer

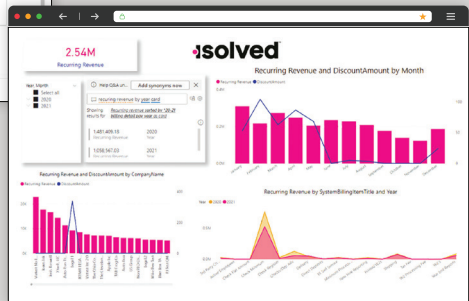


isolated Tax

Save money and leverage a fully integrated Tax and Treasury solution, eliminating the need for an additional vendor to manage your business.

isolated View

Generate information and insights about your business with full access to your data when you need it.



“

I joined isolated after nearly 30 years in the industry and I made that decision because of this team's commitment to the PEO market – an industry that has needed a solution like this for a long time.

”

- Kerrin Jesson, VP, PEO Implementation;
former SVP, Operations at Oasis

“

Security and Compliance
are not secondary
investment areas for
isolved. They are
primary investment
areas for isolved.

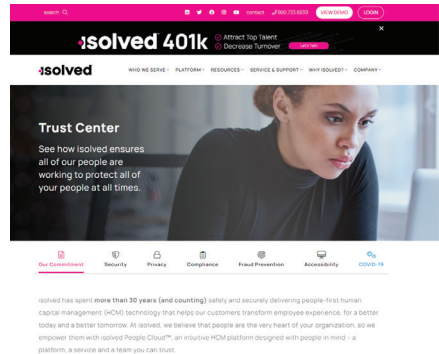
”

Mark Duffell
Chief Executive Officer



Security & Compliance

Our mission is to provide our partners and our clients with a futureproof platform so you can deliver awesome outcomes fast while simultaneously reducing risk. We do this by helping protect you and your clients with a comprehensive commitment to security, privacy, compliance and accessibility.



At isolated, we work hard to build trust with you. From background checks on prospective employees through onboarding to annual compliance training and certification, we ensure all of our people are working to protect all of your people at all times, which in turn helps you build trust with your employees.

Our team works continuously to stay up to date, comply with the latest regulations, maintain best-in-class certifications, and is guided by the highest of industry standards, including the National Institute of Standards Technology (NIST) cybersecurity framework to ensure that you and your customers are protected whenever using isolated People Cloud.

A Team You Can Count On



Todd Atwood
Chief Information
Officer

Law Enforcement
Background and Former
Chief Architect for Global
Risk, Compliance & Security
– Bank of America



Tom Watson
Chief Information
Security Officer

Military & Law Enforcement
background and former
Global Head of IT Security –
F100 Life Sciences Company



Kelee Delaney
Chief Compliance
Officer

Experienced Compliance,
Legal, Risk Management
and Operations Leader
and former executive
with PWC and Paychex

Accelerating Your Time to Value



We understand that winning more and growing faster requires a smooth and rapid migration from your current solution to isolved. Our team is ready to help you implement quickly and train your staff so you can shorten your time to value and minimize any disruption.



Implementation

We have invested significantly in our implementation and conversion capabilities. We've assembled a best-in-class industry team – sourced directly from the PEO industry – to optimize and execute our projects as well as work closely with our Product teams to develop tools that help with the data extraction process and migration of your client data. These are “your people”, and they will give you the confidence you need to move to a next generation platform.

We're also ready to augment your existing teams as needed to further reduce the disruption of migration. Let us work with you on the right approach to accelerate your time to value.



Training

Welcome to isolved University! We'll help you quickly train your team on the isolved platform through our University – a powerful mix of training and certification as well as a knowledgebase you can always refer to keep your proficiency at a high level.



Sales & Marketing

While we are migrating your clients to isolved, our Marketing team will be preparing you to go to market. We'll help you get your sales force ready to sell and win new business and expand existing business with agency-level marketing materials as well as on-demand support from our Solution Consultants to help you showcase your capabilities.



Partner survey says...

57%

We win in the market
10% more with isolated
than without

24% win 20% or more in
the market with isolated

84%

Our customers'
satisfaction has
improved with isolated

42% have much higher
customer satisfaction

53%

Our business will grow
more than 10% this year

23% expect growth in
excess of 20% this year

A low-angle, upward-looking photograph of three business professionals in a modern office setting. A man in a dark suit on the left and a man in a light blue suit on the right are shaking hands. A woman in a dark blazer stands between them, smiling. The background is blurred, showing office architecture. In the top left corner, there is a decorative graphic consisting of two overlapping white circles and a vertical line of 15 small circles, some of which are pink. The text 'Win More. Grow Faster.' is overlaid in the lower half of the image.

**Win More.
Grow Faster.**

isolved Network