



isolved
People Cloud™

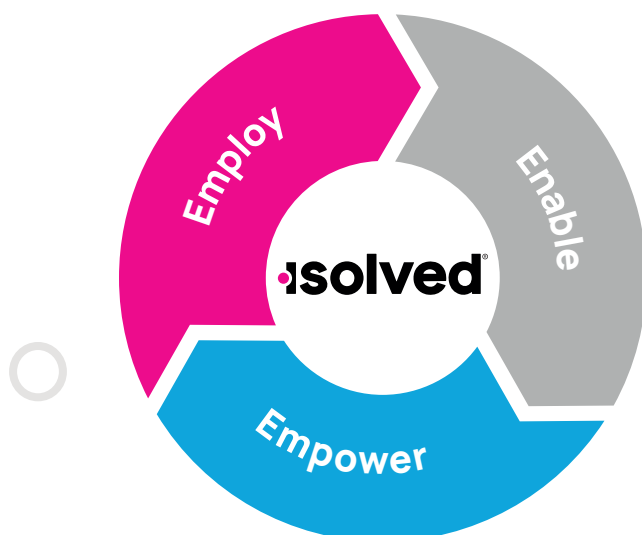
Simple, secure and seamless human capital management (HCM) technology that delivers the outcomes you need to transform your business.

The role of human resources (HR) is changing. Creating an employee experience (EX) that matters is critical for finding and keeping the best employees, for improving customer experience (CX) and, ultimately, for delivering high returns on workforce investments. Businesses, however, need a single source of truth for data, recommendations and action.

isolved® is the most-trusted HCM technology leader, scoring #1 in both user experience and vendor satisfaction in Sapient Insights Group's 26th Annual HR Systems survey. **Our solutions are delivered to more than 6 million employees and 168,000 employers** — who use them every day to boost performance, increase productivity and accelerate results while reducing risk.



Our HCM platform, **isolved People Cloud™**, intelligently connects and manages the employee journey across HR, payroll, benefits, talent acquisition, talent management, workforce management and more. No matter the industry, we help high-growth organizations employ, enable and empower their workforce by **transforming the employee experience for a better today and a better tomorrow.**



- 1 Employ**
Find and onboard the right talent with intuitive tools.
- 2 Enable**
Meet everyone's needs with adaptive self-service tools.
- 3 Empower**
Reward and recognize your people, provide social learning and more.

Explore isolved People Cloud™



isolved People Cloud delivers an elevated employee experience, with a consumer-grade user interface that is intuitive and performance-ready on any device. Accessible via your preferred web browser or mobile app, you can get the information you need when you need it most. Additionally, isolved People Cloud offers a conversational virtual assistant to support your people in the flow of work (to answer common HR questions 24/7), intelligent reporting (for a single source of workforce truth), predictive analytics (to identify and model improvements to business strategy) and even a marketplace of solutions (to extend your investment further). isolved People Cloud will support you across four core areas.

HR, Payroll & Benefits

Easily manage the entire employee life cycle, securely store and share data, ensure organization-wide compliance while offering effortless online benefits enrollment. isolved even helps you process payroll efficiently, accurately and completely every time.

Workforce Management

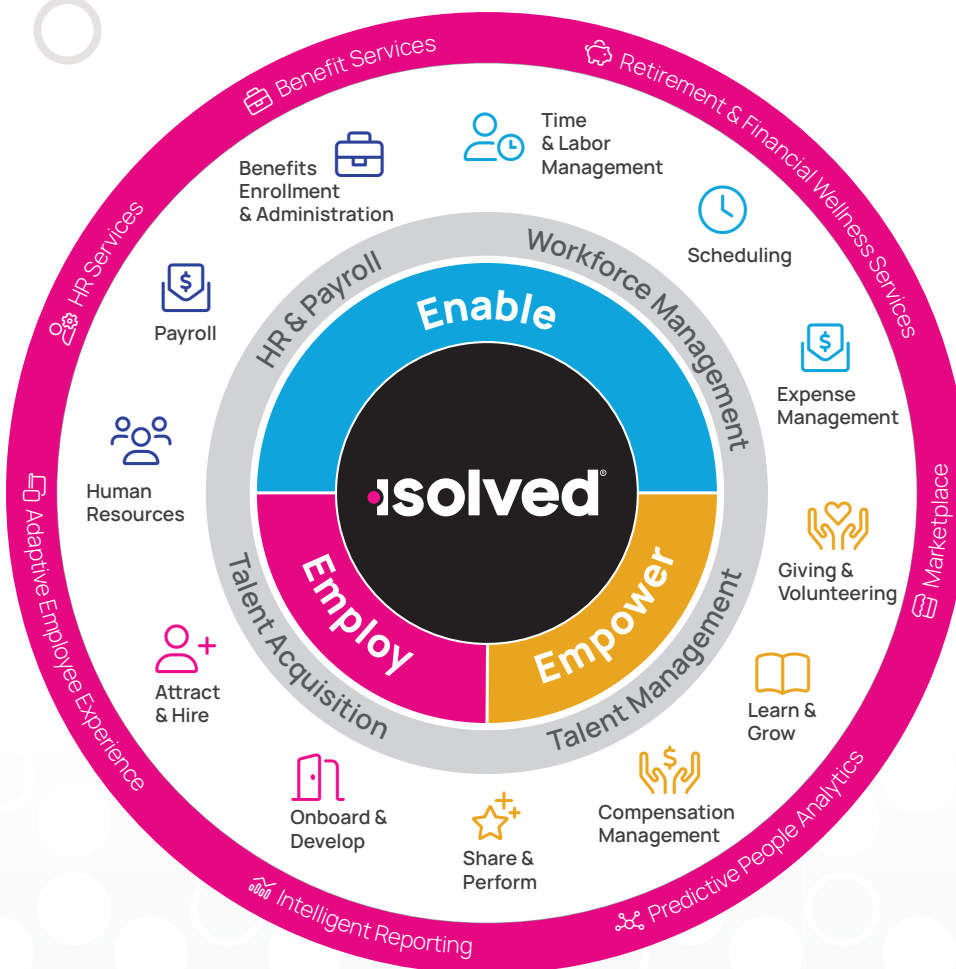
Accurately track, manage and process time, attendance and expenses for your entire workforce (remote or mobile), while also offering streamlined self-service that saves time and money.

Talent Acquisition

Attract, recruit and hire the most talented individuals, while helping newly hired employees become productive fast, by eliminating paperwork and redundancies from the onboarding process.

Talent Management

Empower employees to stay connected, share ideas, seek feedback and collaborate - while improving productivity, boosting performance and strategically compensating and rewarding success.



The Right Combination of Software and Services

And while the technology can free your time and give you the information you need to shape strategy and meet your business goals, the advice, support and tools delivered through isolated HR Services will help you make the most of that new efficiency and information. Together, they will help you define and deliver an employee experience that attracts and retains the best talent, develop your workforce and deliver strategic insight to shape the future of your business.

HR Services

isolated HR Services extends your team and enables you to become more strategic and run at top operational efficiency. A dedicated HR compliance and best-practice professional is with you every step of the way, tapping into a wealth of existing employee insights and providing you with HR assessments, recommendations and regular check-ins. Improving inefficient processes, staying ahead of changing regulations, managing staff turnover and more is all possible with isolated HR Services.

Financial Wellness and Retirement Services

Our financial wellness and retirement services equip you with the tools needed to help your employees manage their money more effectively. From offering retirement plan options, to cost-effective benefits and making pay more accessible through pay cards and earned wage access, we have the offerings you need to support your employees. By integrating a comprehensive portfolio of financial wellness and retirement services, our solutions give employees the opportunity to reach their financial goals and access funds when they need it most.

Benefit Services

isolated provides a dedicated team of experts to help streamline end-to-end benefit administration and allow your internal resources to add more value to the business. From compliance services like ACA, POP and ERISA, to flexible benefit accounts like FSA, HSA and HRA, as well as continuation services like COBRA and leave administration, you can rest assured that isolated has you covered with all your comprehensive benefit services' needs.



The Return on Investment of isolved People Cloud

Solving the challenges of building a more efficient, strategic HR function requires bringing together technology, expertise and services designed for the needs of small-and medium-sized businesses. The isolved approach delivers technology and services in a way that is unique and impactful, enabling our customers to:



Increase Productivity with an Intelligently Connected Platform

Eliminate admin and added work to get more time back in your day and focus on the things that really matter with an intelligently connected platform that automates broad and deep to deliver a “single source of truth” and increased productivity for you and your business — no compromise.

Ensure Performance with isolved Employee Experience by Design™

Spend less time on support and technical issues while ensuring your employees can spend more time being productive with employee experience by design that ensures operational and performance consistency on every device, every time. Progressive, right?

Accelerate Decisions with isolved Analytics Everywhere™

Make better, faster and more informed decisions with deep actionable insights on every aspect of your business that will save you time and stress from measuring, managing and motivating your workforce – in real-time and in-context – all without interrupting the flow of work.

Energize Talent with isolved People Heroes World™

Training and compliance are just the start. Energize your talent to grow and hone their skills, with an immersive continual learning experience and community that keeps them informed — increasing satisfaction and boosting growth throughout their career journey.

Reduce Risk with Your Most-Trusted Partner

Having a secure, stable and scalable partner means you're always cared for — with timely, comprehensive support, backed by local, knowledgeable service when you need it and with industry-leading NPS and vendor satisfaction scores independently validated — we provide peace of mind.



Empowering People Heroes

isolved People Cloud simplifies the business of human resource management, from HR, payroll, benefits to talent, engagement and workforce management – all from one intelligently connected platform.

The platform is so powerful that we call the professionals who use it People Heroes, because it empowers them to transform employee experience to better their companies and communities. In fact, isolved People Cloud provides the strategic analytics and workforce insights that HR and business leaders need to stay agile and future-proof their organizations.

Seamlessly deliver the entire employee journey with isolved People Cloud—routinely rated by your peers and industry analysts as a leading HCM platform.



To learn more, visit our website
at www.isolvedhcm.com
or call 1-800-733-8839

isolved
People Cloud.