



isolved™

HCM Designed With **People in Mind**

As the future of work continues to shift, one thing remains constant: **that HCM is an area of business that will always evolve.**

Why? Well, because we as people—and the world around us—are always changing.

There's a lot happening right now. Employees increasingly want more purpose and culture from their employers, HR managers must be more "forward-looking," how we collaborate and our physical workspace are different, and regulations and compliance requirements are constantly changing.

But what it all comes down to is this: your employees are the heart of your organization, and their satisfaction affects productivity and customer satisfaction.

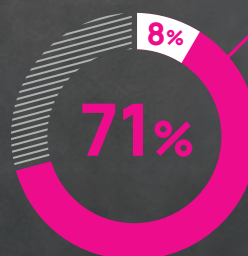
You need people-first technology that provides a positive employee experience and reflects the culture and values of your organization. **And a technology partner** that will evolve along with all of you as your needs change over time.



Culture and values are the top factors (**22%**) in overall employee satisfaction.¹



46% of organizations believe that a **lack of company culture** is the biggest barrier to digital transformation.²



71% of companies say that **governing changes around workforce strategies** are important to their success over the next year and a half. But only **8%** are actually prepared to adopt the changes.³

¹"Which Workplace Factors Drive Employee Satisfaction Around the World," Glassdoor

²"Anticipate and Exploit the Top 12 Future Work Trends," Gartner Research

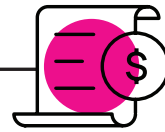
³"Governing workforce strategies," Deloitte

Introducing

isolved People Cloud™

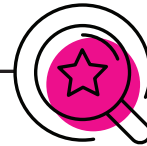
The Connected HCM Platform Designed to Delight Your People

isolved People Cloud goes beyond typical HCM to seamlessly connect and manage the entire employee journey—from hire to retire. The intuitive technology focuses on creating a positive employee experience, effectively engaging your workforce to foster a culture of collaboration and growth. Plus, it provides all the isolved tools you already love in a single, intelligently-connected platform that effortlessly adapts to help you prepare for the future of work.



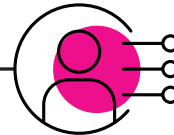
HR & Payroll

Manage, strengthen and compensate your workforce.



Talent Management

Attract, hire, onboard and manage the best talent.



Workforce Management

Track and process time, expenses, benefits and more.



Engagement Management

Empower employees to share, perform, learn and grow.

Organizations that invest in employee experience have more than **4x the profit and 2x the revenue**. And, employees that experience higher engagement levels outperform their peers **147% in EPS**.⁴

⁴ "Design Your Employee Experience as Thoughtfully as You Design Your Customer Experience," Harvard Business Review



Revolutionize Your Employee Experience. Transform Your Organization.

isolved People Cloud is Built to Do More for HCM



HR & Payroll

Manage, strengthen and
compensate your workforce

Process payroll efficiently, accurately and on time,
and ensure payroll compliance

Easily and securely store and share employee data
with a single-source database

Manage and track mandated training requirements

Eliminate paper-based processes



Talent Management

Attract, hire, onboard and
manage the best talent

Post positions to hundreds of job boards with one touch

Organize talent acquisition processes and enable
collaboration among hiring teams

Improve the applicant experience and attract more
qualified candidates

Reduce time-to-hire and costs per hire

Track Work Opportunity Tax Credit (WOTC) eligibility
and ensure compliance



Workforce Management

Track and process time,
expenses, benefits and more

Close payroll with one touch

Eliminate timeclock errors with geofencing

Ensure timecards are complete and accurate, every time

Experience simplified, organized benefits enrollment

Streamline employee decision-making



Engagement Management

Empower employees to share,
perform, learn and grow

Increase employee engagement and reduce turnover

Promote peer-to-peer collaboration and feedback

Proactively support employee career journeys

Move quickly from goals to achieving culture and purpose

Offer a full learning management system



Why Trust isolved? Because We've Got People-First HCM Down to a Science.

4 Ways We Drive Customer Success That Others Don't



Accelerate Results

with Intelligently Connected HCM

Eliminate errors, inefficiencies and redundancies with an intelligently-connected platform that automates and delivers a "single source of truth" to accelerate results.



Increase Productivity

with Employee Experience by Design

Help your people achieve their goals through a transformational employee experience that fosters a collaborative and purposeful culture, increases productivity and leads to sustained and profitable growth.



Boost Performance

by Engaging the Workforce of the Future

Training and compliance are just the start. Empower employees to grow and hone their skills with feedback and communication that keeps them informed, increases satisfaction and boosts performance.



Reduce Risk

with Regional, Relevant & Responsive Service

Having a stable partner means you're in safe hands. With timely, comprehensive support, backed by local, knowledgeable service, we work hard to ensure your peace of mind.



The most challenging business
is the business of people.

Make it easier with isolved.

Learn more about how we can help you employ,
enable and empower your workforce today.

isolvedhcm.com
800-733-8839

isolved™

Transforming Employee Experience